

Comments on the exam in Computer Architecture 23/3/2005

Answers are found in the textbook. Comments on some of the questions:

8. The set of registers visible to the programmer at a certain point in the program.

11. It requires fewer wires.

12. A pointer to the next instruction to be executed (not, as many wrote, to the current instruction)

16. Because several disks are used in parallel.

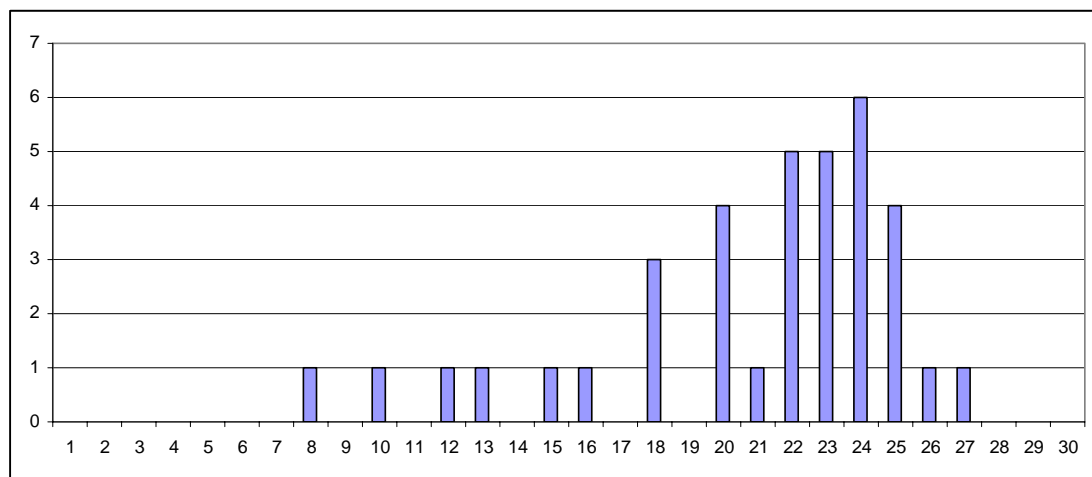
21. The memory address bus is used to indicate the I/O-device, and the memory data bus to transfer data. (No data is actually written to memory – some confused this with DMA).

23. That a line in memory can be placed at different locations in the cache.
(Surprisingly few got this right.)

30. It depends on which of S and R was 1 latest.

Results

36 persons sat the exam. 27 (=75%) scored at least the 20 points required for grade G and 6 (17%) scored at least the 25 points required for a credit towards a higher grade. The average score was 20.9 and median 22. Score distributions are as follows:



Graded exams can be collected at the Kansli, Building 4.

12/4/2005

Joachim Parrow